



# Frammenti #1

---

TECHNICAL RIDER - INDOOR SHOW

## **Contacts**

Director/artist: Cecilia Rosso  
Phone number: +39 345 0567058  
Mail: [info.ceciliarosso@gmail.com](mailto:info.ceciliarosso@gmail.com)

Technician: Jakob Lohmann  
Phone number: +49 1578 7485809  
Mail: [jakob.lohmann@yahoo.de](mailto:jakob.lohmann@yahoo.de)

## **Informations about the show**

The show has a duration of 45 min: 15min of prologue and 30min of show. The show is travelling by car and the cast is composed by a performer and a technician.

The circus disciplines presented in the show are aerial straps, hair hanging and floor movements.

The show required a frontal disposition of the public. The minimum amount of audience is 50 people.

## **Stage requirements**

The show requires an intimate space with the following measurements:

Stage: 8x8m

Height: 7m

A static aerial point with a WLL of 350kg is needed and needs to be provided by the contractor (drawings can be found at page 3)

Other 4 aerial point needs to be provided to suspend some scenography elements (check drawing at page 3 for disposition)

The stage needs to be covered with a black dance floor, the black dance floor needs to be provided by the contractor.

## **Sound**

The show needs 2 perimetrical microphones to amplify the performer's voice.

The microphones can be placed downstage or hang.

The company brings the laptop, the contractor needs to provide the sound system and a mini-jack connection.

## **Light**

The lights need to be provided by the contractor.

Check the light plot at page 4 for elements and dispositions

The DMX cable needs to arrive to the control desk on stage that will be located on stage right in front of the anchor point for the aerial apparatus.

## **Build up and down time**

The show needs 4h of build up excluding the preset (build up of the portique, light setting and disposition of the dance floor)

The show needs 1h for build down.

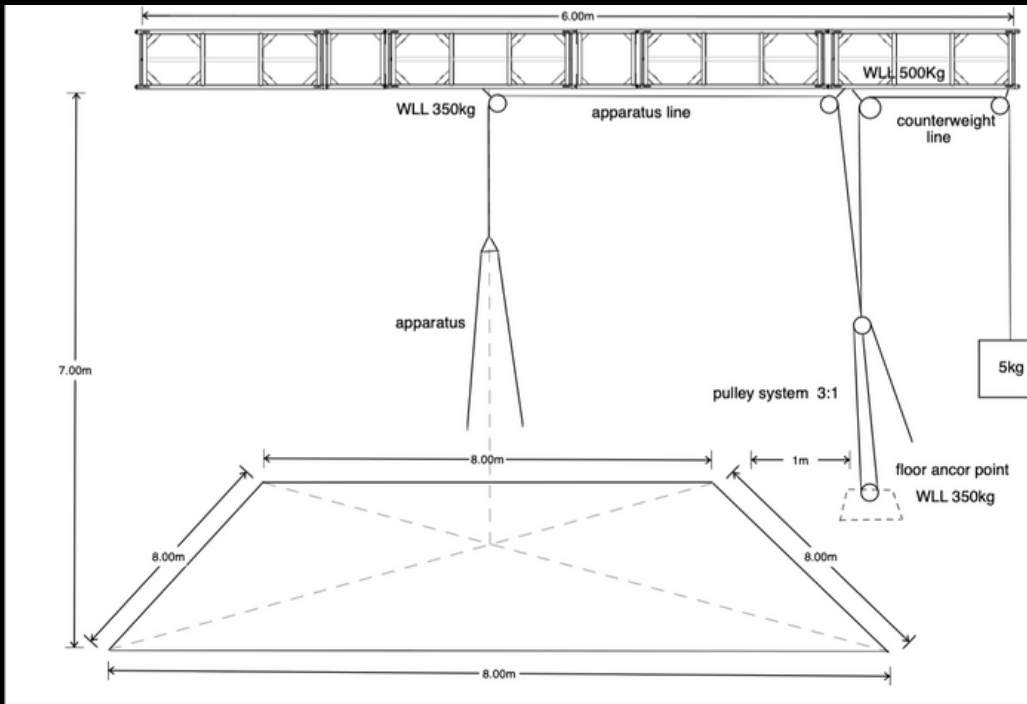
## Rigging

The contractor needs to provide a static aerial point with a WLL of 350kg. An anchor point on the right side of the stage, with the same WLL of 350kg, needs to be provided.

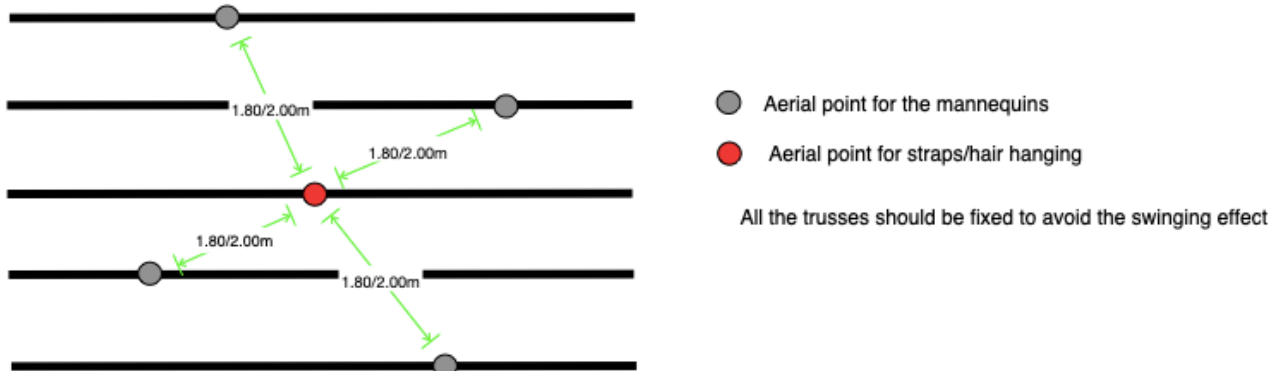
The contractor needs to provide 4 additional rigging points and anchor points with a WLL of 50kg for scenography elements. The anchor points need to be respectively two on one side of the stage and two on the other side.

Check the drawing below to have a visualisation of the stage needs.

Adaptation are possible, please contact +49 15787485809 (Jakob Lohmann)



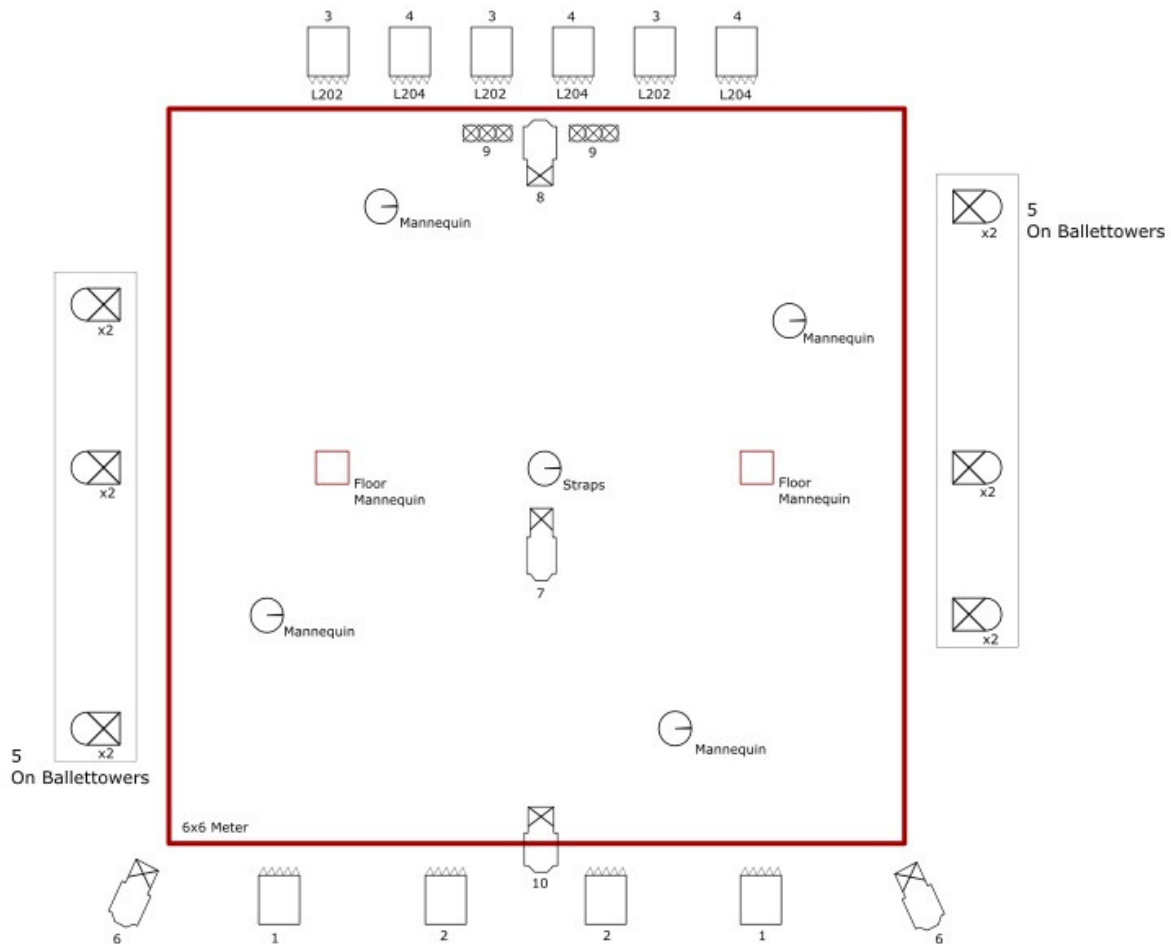
Picture below: disposition of the points from the top.







# Frammenti #1

TECHNICAL RIDER

## Light plot



-  12 PAR 64 on Ballettowers [6Towers]
-  5 ETC Profiles; Nr 8 &10 on the floor
-  Set of Blinders
-  10 PC Fresnel 1000W

## **Additional info**

A water connection and a mirror needs to be accessible to the performer.

The contractor is supposed to cover the travel cost from and to the Netherlands.

Accommodation cost during the travel and on location needs also to be cover by the contractor.

The contractor needs to provide lunch and dinner during the period of work for the full crew of the collective.

For further info or clarification regarding technical information, contact:  
+49 15787485809 (Jakob Lohmann)

For info regarding production contact:  
+39 3450567058 (Cecilia Rosso)